

ANTARES IV

SPUD BARGE



PRINCIPAL PARTICULARS

VESSEL TYPE	SPUD BARGE
SHAPE	BOX
YEAR OF BUILT	2014
PLACE OF BUILT	BAHRAIN
FLAG	PANAMA
CLASS	RINA
GRT	979 TONS
NRT	293 TONS
DEADWEIGHT	2,406 TONS

PRINCIPAL DIMENSIONS

LOA	52.67 MTRS
BREADTH MOULDED	18.29 MTRS
DEPTH MOULDED	3.96 MTRS
DRAFT MOULDED	3.22 MTRS
LIGHT DRAFT	0.70 MTRS

BARGE MOORING SYSTEM

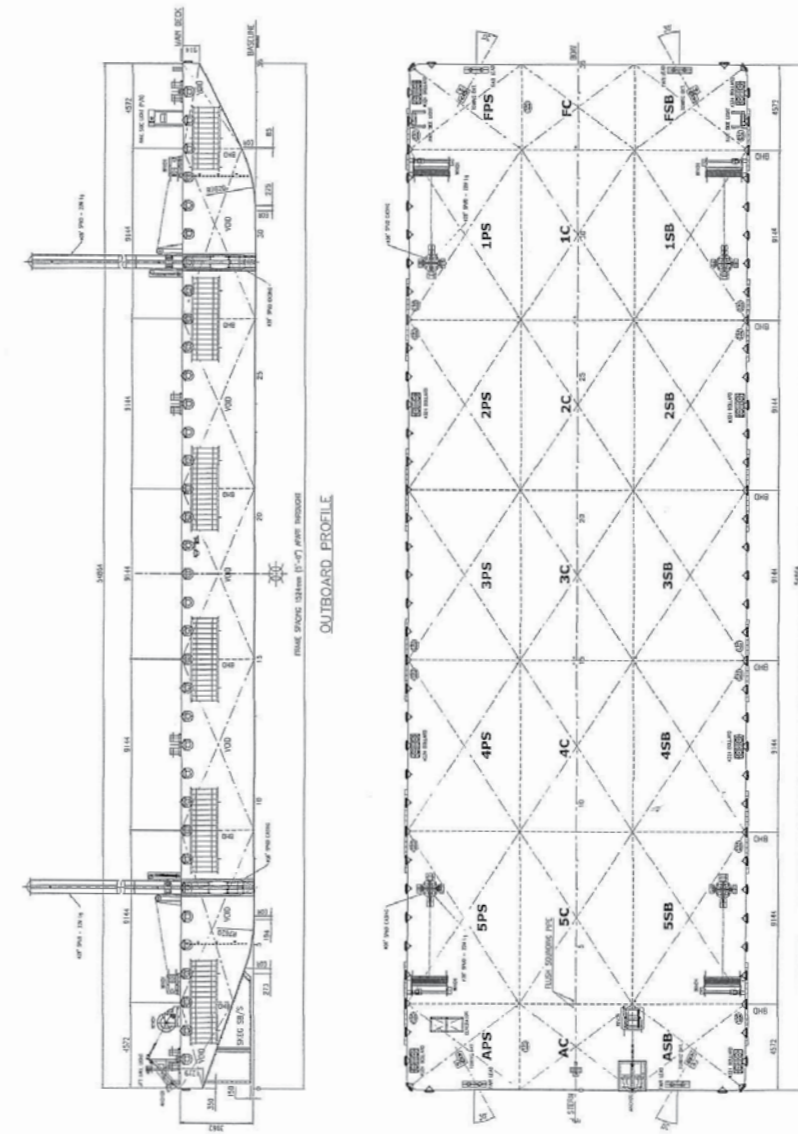
SPUDS	4 NOS
SPUD DIAMETER	78 CMTRS
SPUD LENGTH	18 MTRS
4 POINT MOORING SYSTEM	YES
SPUD WINCHES	4 X 15 TONS
WINCHES SPECIFICATION OF SPUDS	ELECTRO HYDRAULIC, SINGLE DRUM WINCHES
ANCHOR	4 NOS - 2,030 KGS EACH
ANCHOR WINCHES	4 X 10 TONS
ANCHOR WIRE LENGTH	200 MTRS
POWER GENERATOR	2 X PERKINS @ 1500 RPM
POWER GENERATOR CAPACITY	2 X 80 KVA

DECK PARTICULARS

DECK STRENGTH	15 T/M2
DECK AREA	APPROX. 775 M2

OTHER PARTICULARS

FRESH WATER TANK	5 TONS
------------------	--------



SCANTLING TABLE	
1. L. B. S.	SCANTLING
2. L. B. S.	14.5
3. L. B. S.	14.5
4. L. B. S.	14.5
5. L. B. S.	14.5
6. L. B. S.	14.5
7. L. B. S.	14.5
8. L. B. S.	14.5
9. L. B. S.	14.5
10. L. B. S.	14.5
11. L. B. S.	14.5
12. L. B. S.	14.5
13. L. B. S.	14.5
14. L. B. S.	14.5
15. L. B. S.	14.5
16. L. B. S.	14.5
17. L. B. S.	14.5
18. L. B. S.	14.5
19. L. B. S.	14.5
20. L. B. S.	14.5
21. L. B. S.	14.5
22. L. B. S.	14.5
23. L. B. S.	14.5
24. L. B. S.	14.5
25. L. B. S.	14.5
26. L. B. S.	14.5
27. L. B. S.	14.5
28. L. B. S.	14.5
29. L. B. S.	14.5
30. L. B. S.	14.5

PRINCIPAL DIMENSIONS

LENGTH (M/D.) - 54.664 M. (1800 FT.)

BREADTH (M/D.) - 18.290 M. (600 FT.)

DEPTH (M/D.) - 3.962 M. (13.0 FT.)

DECK LOAD - 15 T/M²

CLASS : ABS - A1 BARGE

NOTES:

- PERMISSIBLE DECK LOADS IS TONNES/SQ.M. UDL
- ALL COMPARTMENTS ARE UDL
- ALL MANHOLES TO BE RATED TYPE
- MANHOLES TO CENTRE VODS TO BE OF LONGITUDINAL BND
- SOAKING PIPES TO BE FITTED TO ALL SUCH VODS.

ISSUED BY: [Signature]

CHECKED BY: [Signature]

DATE: 15/08/2014

PROJECT NO: 180-060-113- DECK_CARGO_BARGE

MAIN DECK ARRANGEMENT PLAN